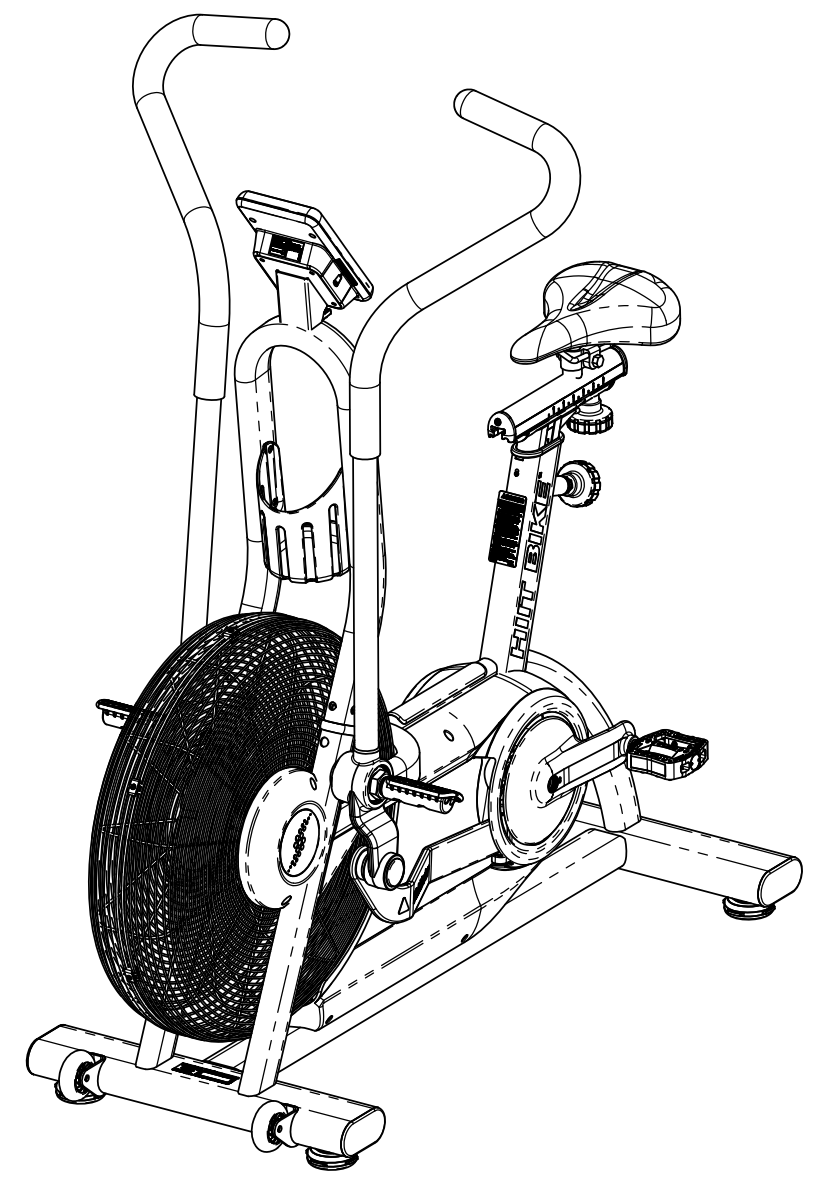


- NOTES:  
 1. REFER TO UNIVERSAL BASE SKU: 9-4650-XXXXP0 FOR COMPLETE BOM  
 2. USE THE FOLLOWING INFORMATION FOR SERIAL AND PACKAGE LABEL  
 A. SKU: 9-4650-BINTP0  
 B. MODEL: BIKE, HIIT BIKE, STAIRMASTER, BLACK

REVISION HISTORY				
REV	DATE	DESCRIPTION	ECO	BY
A	8/31/2017	PRODUCTION RELEASE	15771	AW
B	10/16/2017	ADD 620-8582, IS: -37 WAS: -39, IS: -13 WAS:-26	15819	AW
C	4/10/2018	UPDATE COLOR BOMS	15940	AW

1	718-5789-XX	-31	BASE, ASSY, FAN, HIIT BIKE	1
1.1	718-5486-XX	-37	SHROUD, LEFT, TURBO TRAINER	1
1.2	740-7850-XX	-37	CAP, PLUG, 38mm OD	2
1.3	718-5448-XX	-37	COVER, AXEL, FAN, TURBO	2
1.4	718-5485-XX	-37	SHROUD, RIGHT, TURBO TRAINER	1
1.5	718-5383-XX	-31	Assy, Crank Arm, Left, AirBike	1
1.5.1	718-5424-XX	-37	CAM, HOUSING, BEARING,TURBO	1
1.5.2	718-5430-XX	-35	Crank, Arm, Left, Turbo	1
1.6	718-5382-XX	-31	ASS, CRANK ARM, RIGHT, TURBO	1
1.6.1	718-5424-XX	-37	CAM, HOUSING, BEARING,TURBO	1
1.6.2	718-5423-XX	-35	CRANK, ARM, RIGHT, TURBO	1
1.7	740-7558-XX	-37	END CAP, STABILIZER	4
1.8	718-5611-XX	-26	WELDMENT, FRAME, G2, AIRFIT	1
1.9	718-5816-XX	-13	ASSY, HANDLEBAR, UB, LEFT, HIIT BIKE	1
1.9.1	718-5817-XX	-13	WELMENT, HANDLEBAR, LEFT, HIIT BIKE	1
1.10	718-5813-XX	-13	HANDLEBAR, UB, RIGHT, HIIT BIKE	1
1.10.1	718-5814-XX	-13	WELMENT, HANDLEBAR, RT, HIIT BIKE	1
1.11	718-5566-XX	-13	LINK, UPPER BODY, RIGHT, AIR BIKE	1
1.11.1	718-5569-XX	-13	WELDMENT, LINKAGE, RIGHT, AIR BIKE	1
1.12	718-5567-XX	-13	LINK, UPPER BODY, LEFT, AIR BIKE	1
1.12.1	718-5568-XX	-13	WELDMENT, LINKAGE, LEFT, AIR BIKE	1
1.13	718-5638-XX	-26	Assembly, Grill, Fan, Airfit, Gen2	1
1.13.1	718-5628-XX	-26	GUARD, FAN, LEFT, AIRFIT, Gen2	1
1.13.2	718-5465-XX	-26	KIT,TENSION, GRID, FAN, TURBO	5
1.13.2.1	718-5464-XX	-26	FAN, TENSION, GRID, TURBO	1
1.13.2.2	718-5463-XX	-26	FAN, GRABBER, GRID, TURBO	1
1.13.3	718-5617-XX	-26	GUARD, FAN, RIGHT, AIRFIT, Gen2	1
1.14	718-5466-XX	-37	ASSY, FAN, TURBO	1
1.14.1	718-5467-XX	-37	FAN, TURBO	1
1.15	718-5627-XX	-37	FOOT, ADJUSTABLE, PLASTIC	4
2	718-5487-XX	-35	SHROUD, CRANK RING, TURBO	2
3	718-5519-XX	-37	STEP, COVER, TUBE, TURBO TRAINER	1
4	718-5774-XX	-26	ASSY, DISPLAY BASE, HIIT BIKE	1
4.1	718-5775-XX	-26	ASSY, WELD, DISPLAY, HIIT BIKE	1
5	718-5520-XX	-37	RING, BEAUTY, RAIL SPACER	2
6	718-5799-XX	-37	Kit, Acc., HIIT BIKE	1
6.1	740-7850-XX	-37	CAP, PLUG, 38mm OD	2
6.2	718-5520-XX	-37	RING, BEAUTY, RAIL SPACER	2



**DOCUMENT STATUS:**

NOTICE OF PROPRIETARY INFORMATION  
 THIS DOCUMENT SHALL NOT BE REPRODUCED NOR SHALL THE INFORMATION CONTAINED HEREIN BE USED BY OR DISCLOSED TO OTHER EXCEPT AS EXPRESSLY AUTHORIZED BY CORE HEALTH & FITNESS, LLC.

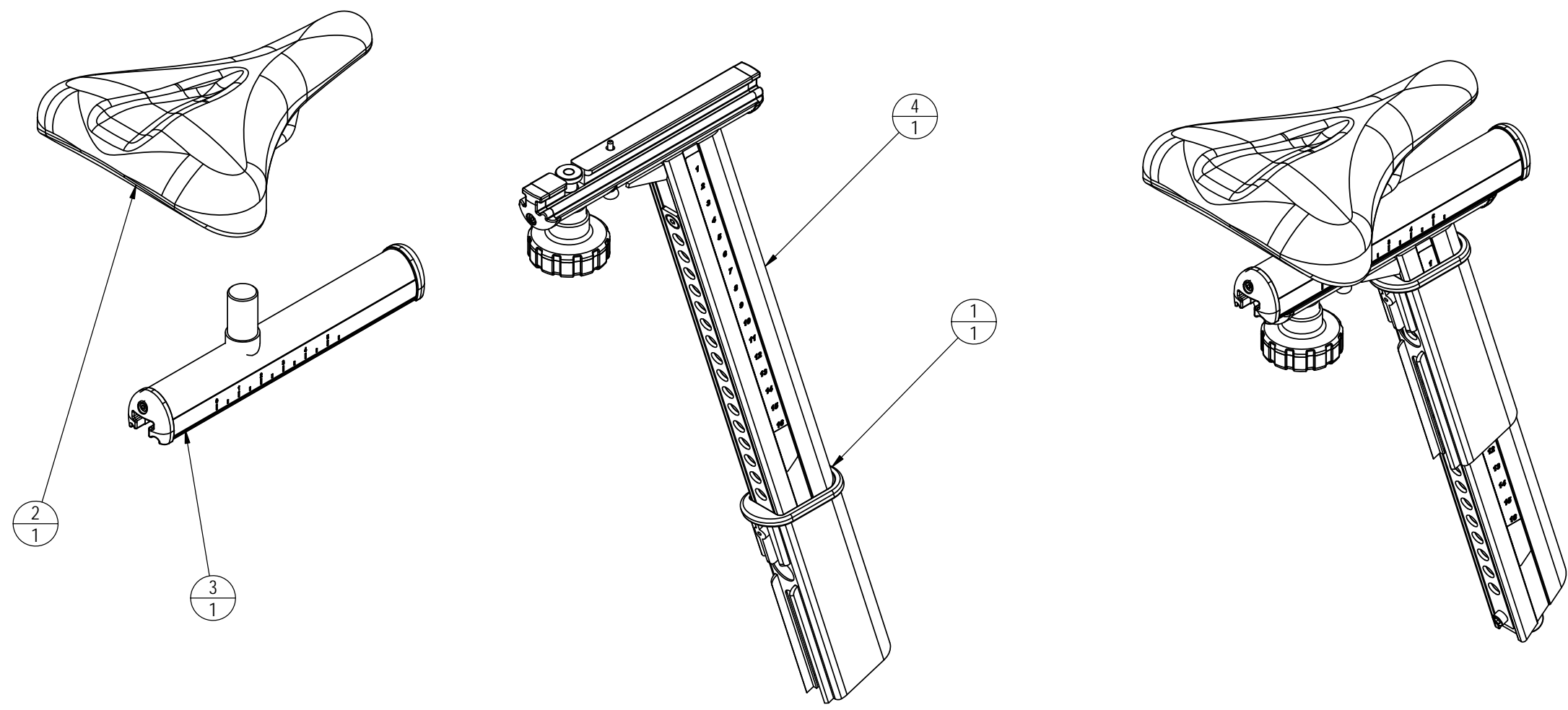
MATERIAL SEE NOTES	THIRD ANGLE PROJECTION			<b>CORE HEALTH &amp; FITNESS, LLC</b> 4400 NE 77th Ave., Suite 300 Vancouver, WA 98662		
FINISH SEE COLOR REFERENCE BOM TABLE	DRAWN	INITIAL AW	DATE 8/31/2017	CORE PART NO	REV	
	CHECKED			9-4650-BINTP0	C	
	APPROVED			TITLE BIKE, HIIT BIKE, STAIRMASTER, BLACK		
VENDOR:	P/N:	U.O.M.	MM	SCALE: 1:10	SHEET 1 OF 1	SHEET SIZE: B

NOTES:

1. FOR SERVICE ITEMS, ASSEMBLE ITEMS BEFORE PACKAGING
  - A. PACKAGE ITEMS IN A MANNER THAT THEY WILL NOT BE DAMAGED DURING SHIPPING/STORAGE
  - B. PACKAGE IN A PLASTIC BAG WITH P/N, DESCRIPTION, REVISION, PO#, ONE KIT PER BAG
  - C. LABEL PACKAGE TO INCLUDE
    - a. PO NUMBER AND DATE
    - b. ASSEMBLY NUMBER
    - c. BAR CODE OF ASSEMBLY NUMBER (CODE 128)
    - d. ASSEMBLY DESCRIPTION
    - e. ASSEMBLY REVISION
    - f. WEIGHT (LBS/KG)

REVISION HISTORY

REV	DATE	DESCRIPTION	ECO	BY
A	12/27/2016	PRODUCTION RELEASE	15635	MMG
B	8/7/2017	CHANGE ADJUSTMENT KNOB	15771	AW



ITEM NO.	PART NUMBER	DESCRIPTION	QTY.
1	718-5622	Sleeve, Post, Seat, AIRFIT, G2	1
2	718-5624	SADDLE, AIRFIT, G2.5	1
3	718-5738	ASSY, SLIDER, AIRFIT G2.5	1
4	718-5746	ASSY, SEATPOST, AIRFIT, G2.5	1

DOCUMENT STATUS:

NOTICE OF PROPRIETARY INFORMATION  
 THIS DOCUMENT SHALL NOT BE REPRODUCED NOR SHALL THE INFORMATION CONTAINED HEREIN BE USED BY OR DISCLOSED TO OTHER EXCEPT AS EXPRESSLY AUTHORIZED BY CORE HEALTH & FITNESS, LLC.

CLASS OF WORK	UNLESS OTHERWISE SPECIFIED DIMS ARE IN mm. TOLERANCES FOR MEASURE OF LENGTH ARE:								ANGLES = ±2°	
	0.5 to 3	> 3 to 6	> 6 to 30	> 30 to 120	> 120 to 400	> 400 to 1000	> 1000 to 2000	> 2000		
FINE	±0.05	±0.05	±0.1	±0.15	±0.2	±0.3	±0.5	----		
MEDIUM	±0.1	±0.1	±0.2	±0.3	±0.5	±0.8	±1.2	±2		
COARSE	±0.2	±0.3	±0.5	±0.8	±1.2	±2	±3	±4		
VERY COARSE	----	±0.5	±1	±1.5	±2.5	±4	±6	±8		

MATERIAL: SEE BOM  
 FINISH: N/A  
 VENDOR: N/A  
 P/N: N/A

THIRD ANGLE PROJECTION		
DRAWN	INITIAL	DATE
CHECKED		
APPROVED		
	U.O.M.	MM

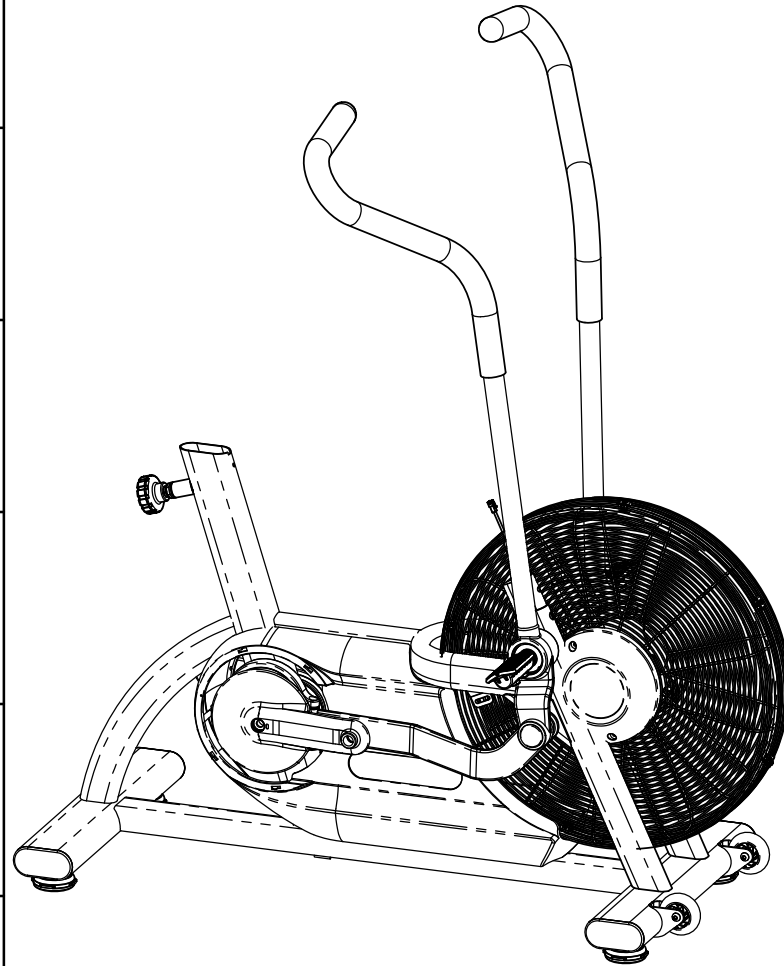
**CORE HEALTH & FITNESS, LLC**  
 4400 NE 77th Ave., Suite 300  
 Vancouver, WA 98662

CORE PART NO: 718-5734  
 REV: B

TITLE: ASSY, SEAT POST, W/ SLIDER, AIRFIT G2.5  
 SCALE: 1:4  
 SHEET 1 OF 1  
 SHEET SIZE: B

NOTES:  
1. COLOR IS SPECIFIED IN FINAL SKU; COLOR DESIGNATION PER-XX SPECIFIED IN SOP 620-200-112

REVISION HISTORY				
REV	DATE	DESCRIPTION	ECO	BY
A	9/5/2017	PRODUCTION RELEASE	15771	AW



ITEM NO.	PART NUMBER	DESCRIPTION	QTY.	NOTES
1	110-3605	SCREW, M4.2, 38mm,PHT, PH, CS, ZP	5	
2	110-3709	Screw, M5x0.8, 10mm, PHM, PH, CS, NKL	4	
3	718-5486-XX	SHROUD, LEFT, TURBO TRAINER	1	
4	740-7850-XX	CAP, PLUG, 38mm-OD	2	REF
5	718-5448-XX	COVER, AXEL, FAN, TURBO	2	
6	718-5485-XX	SHROUD, RIGHT, TURBO TRAINER	1	
7	110-3604	SCREW,4.2M, 19mm, PHTF, PH, CS, ZP	1	
8	140-3613	Key, Parallel, 6mm X 6mm X 12mm	2	
9	740-7555	NUT, AXLE, B/B, M24x1.5	2	
10	740-7553	BEARING, 6005 SERIES, 25x47x12, 2RS	4	
11	140-3554	Retaining, Round Wire, 50 OD X 2.5	4	
12	740-7916	M5 X 16MM, DOWEL PIN	2	
13	718-5639	Assy, Pulley, Trans, Airfit, Gen2	1	
14	130-1814	BELT, 6J460, POLY-V	1	
15	130-1812	BELT, 6PK910, POLY-V	1	
16	718-5378	ASSY, BOTTOM BASKET, TURBO	1	
17	718-5383-XX	Assy, Crank Arm, Left, AirBike	1	
18	740-8145	BOLT, CRANKARM, M8	2	
19	718-5382-XX	ASS, CRANK ARM, RIGHT, TURBO	1	
20	718-5277	NUT, AXLE, B/B, E-/S- BIKE, GEN 2	3	
21	718-5431	BB spacer	1	
22	718-5387	ASSY, TENSIONER, MAIN, AirBike	1	
23	730-0899	Screw, M6x1.0, 12mm, PHM, PH, SS	1	
24	740-7164	Washer, M6, Ø6.5xØ16x1mm, SS	1	
25	120-3247	WASHER, ISO7089, M12	1	
26	110-3706	Nut, Nylor, M12x1.5, CS, ZP, Gr-10	1	
27	718-5614	PULLEY, K6, POLY-V, Ø60mm X Ø25mm	1	
28	718-5615	Spacer, Trans, Airfit, Gen2	1	
29	718-5612	Shaft, Trans, Airfit, Gen2	1	
30	718-5619	Spacer, Trans, Airfit, Gen2	1	

ITEM NO.	PART NUMBER	DESCRIPTION	QTY.	NOTES
31	740-7187	Screw, M6x1.0, 10mm, BHC, HE, SS	2	
32	740-8006	WHEEL, FRONT FOOT, SPINNER	2	
33	740-8007	Bolt, Sex, M6x1.0, Ø8mm x 30mm	2	
34	718-5627-XX	Foot, Adjustable, Plastic	4	
35	740-7558-XX	END CAP, STABILIZER	4	
36	718-5611-XX	WELDMENT, FRAME, G2, AIRFIT	1	
37	110-3653	Screw, M8x1.25, 16mm, HCS, HE, CS, NKL, Gr-10.9	4	REF
38	740-9201	KNOB, POP-PIN, ASSEMBLY, S5/S7	1	
39	718-5562	CABLE, SENSOR, DISPLAY, AIR BIKE	1	
40	140-3490	GROMMET, OD: .44", ID: .25", TH: .25", PU	1	
41	731-0355	WASHER,PLAIN,M8,NARROW	4	REF
42	120-3405	Washer, Wave, Ø0.393" x Ø0.5" x 0.007"THK	2	
43	110-3566	Screw, M8x1.25, 20mm, SHC, HK, AS, NP, EC B, Gr-12.9	2	REF
44	120-3353	Washer, Belleville, Ø8.3 x Ø25 x 3mm	2	REF
45	718-5816-XX	ASSY, HANDLEBAR, UB, LEFT, HIIT BIKE	1	
46	718-5813-XX	HANDLEBAR, UB, RIGHT, HIIT BIKE	1	
47	718-5566-XX	LINK, UPPER BODY, RIGHT, AIR BIKE	1	
48	718-5567-XX	LINK, UPPER BODY, LEFT, AIR BIKE	1	
49	110-3601	PIN, 10MM OD X 75MM, M6 BOTH ENDS	2	
50	110-3600	Screw, M6x1, 12mm, SHFC, HK, AS, NKL, Gr-12.9	4	
51	718-5638-XX	Assembly, Grill, Fan, Airfit, Gen2	1	
52	718-5466-XX	ASSY, FAN, TURBO	1	
53	731-0373	WASHER,PLAIN,M6	6	
54	740-7404	Screw, M6x1.0, 12mm, SHC, HK, SS	6	
55	718-5787	GROMMET, 14MM SLOT, 2 CABLE, HIIT BIKE	1	
56	718-5797	FOOT PEG, HIIT BIKE	2	REF

**DOCUMENT STATUS:**

NOTICE OF PROPRIETARY INFORMATION  
THIS DOCUMENT SHALL NOT BE REPRODUCED NOR SHALL THE INFORMATION CONTAINED HEREIN BE USED BY OR DISCLOSED TO OTHER EXCEPT AS EXPRESSLY AUTHORIZED BY CORE HEALTH & FITNESS, LLC.

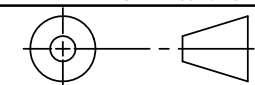
MATERIAL  
SEE BOM

FINISH  
SEE NOTES

VENDOR:

P/N:

THIRD ANGLE PROJECTION



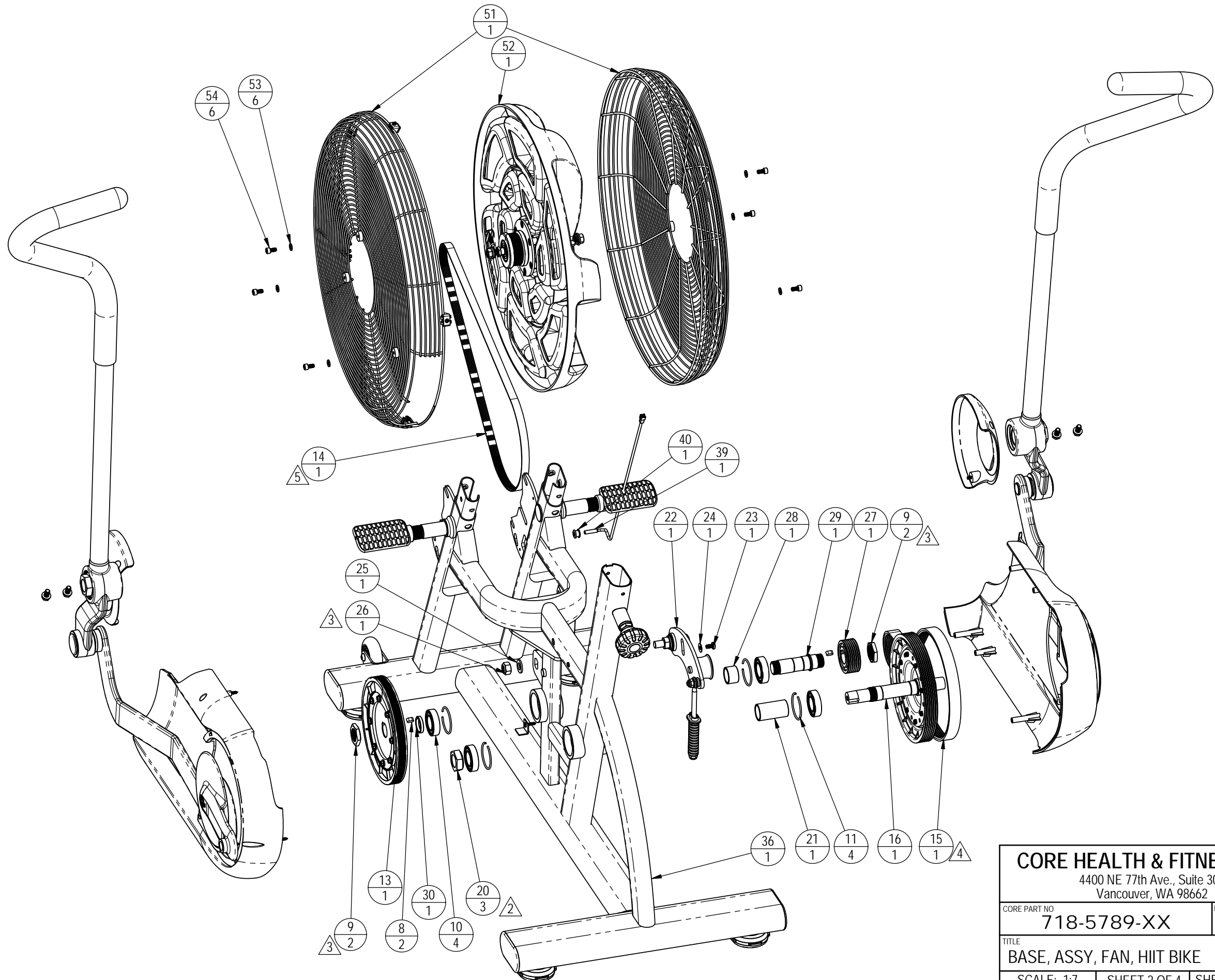
DRAWN	INITIAL	DATE
	AW	9/5/2017
CHECKED		
APPROVED		

**CORE HEALTH & FITNESS, LLC**

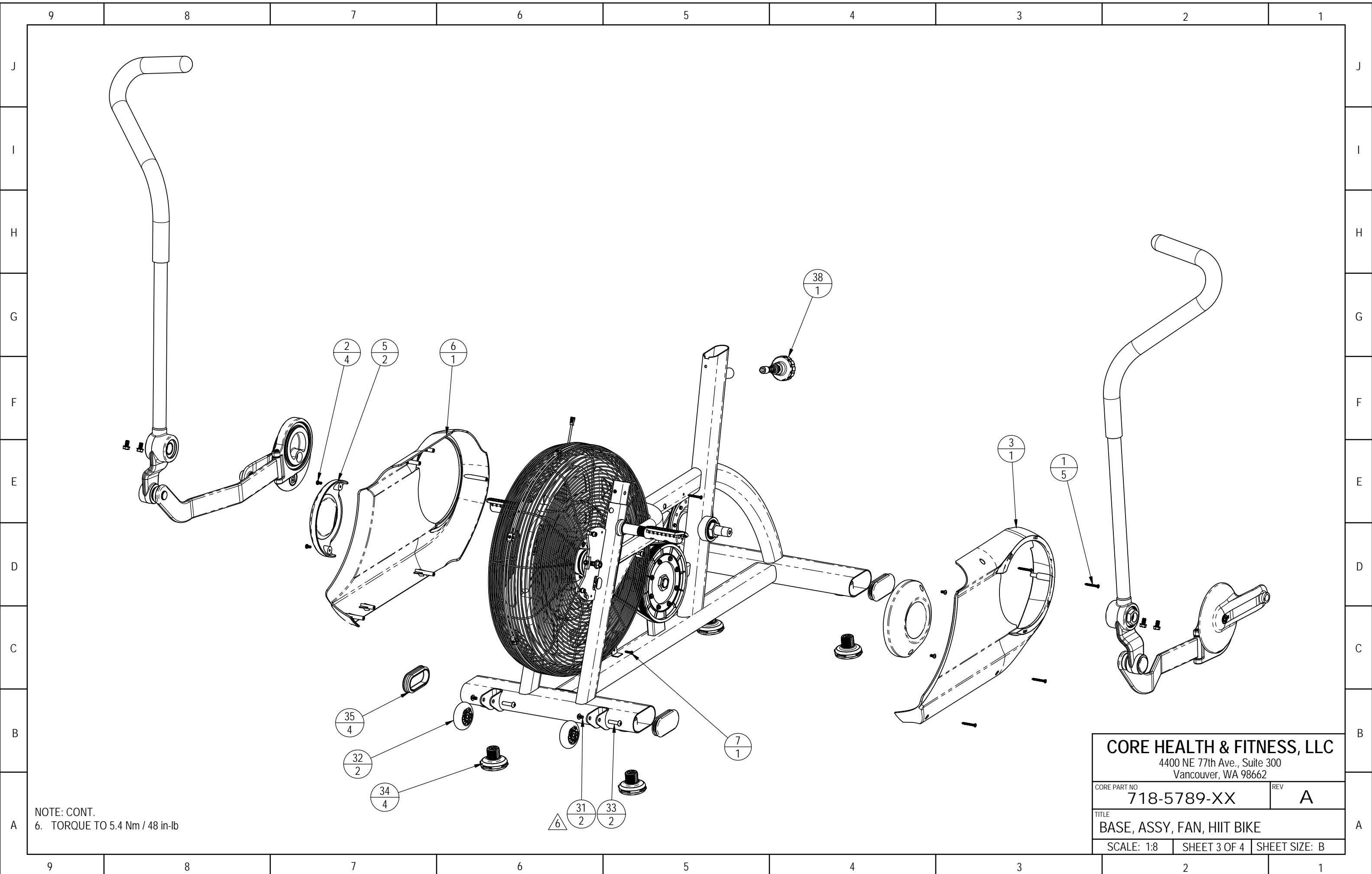
4400 NE 77th Ave., Suite 300  
Vancouver, WA 98662

CORE PART NO	REV
718-5789-XX	A
TITLE BASE, ASSY, FAN, HIIT BIKE	
SCALE: 1:12	SHEET 1 OF 4
SHEET SIZE: B	

- NOTES: CONT.
2. TORQUE TO Nm 67.8 Nm/ 50 ft-lb
  3. TORQUE TO Nm 54.2 Nm / 40 ft-lb
  4. TENSION BELT TO 130-140 Hz
  5. TENSION BELT TO 95-105 Hz

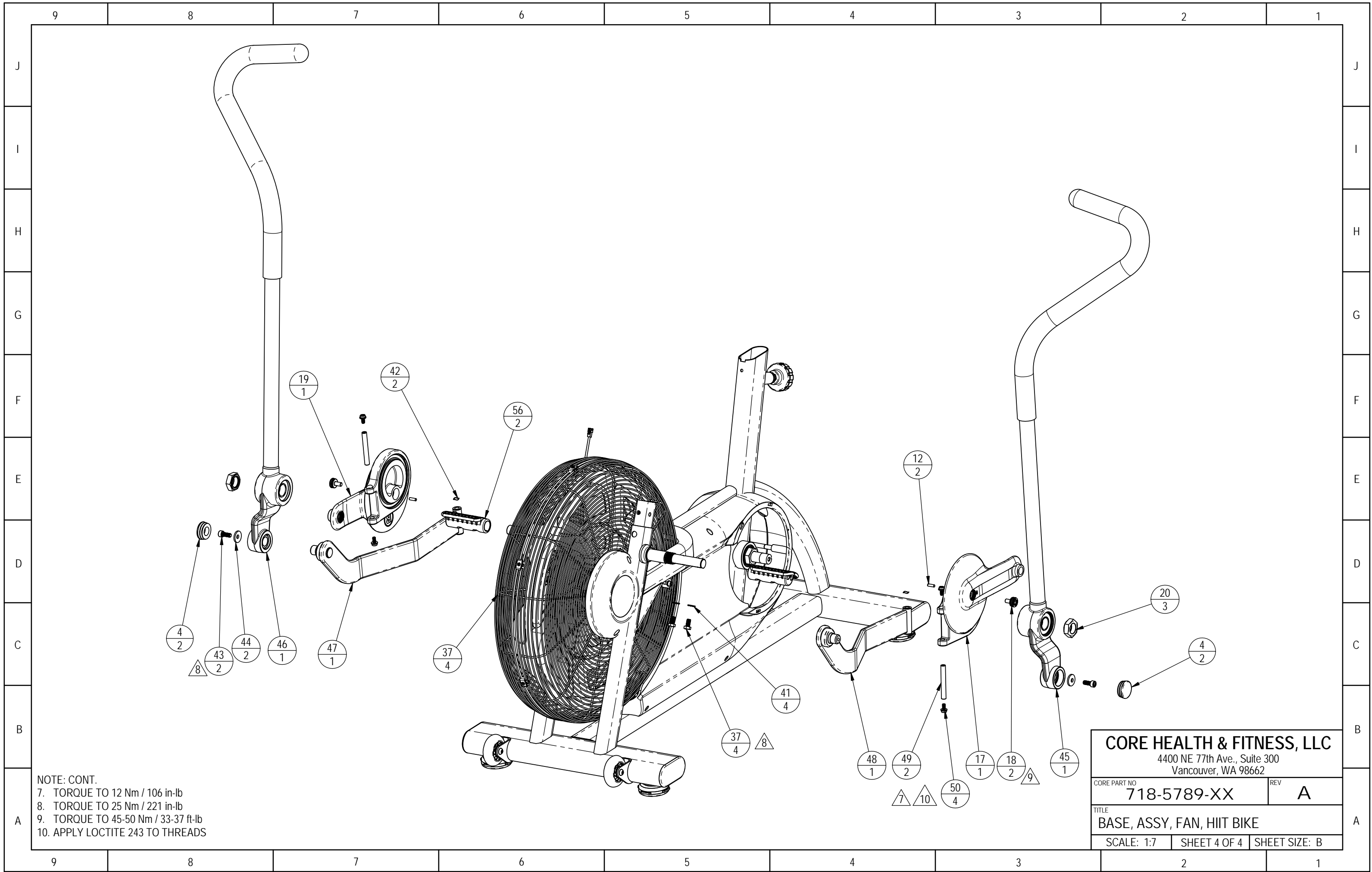


<b>CORE HEALTH &amp; FITNESS, LLC</b>		
4400 NE 77th Ave., Suite 300 Vancouver, WA 98662		
CORE PART NO	718-5789-XX	REV A
TITLE BASE, ASSY, FAN, HIIT BIKE		
SCALE: 1:7	SHEET 2 OF 4	SHEET SIZE: B



NOTE: CONT.  
6. TORQUE TO 5.4 Nm / 48 in-lb

<b>CORE HEALTH &amp; FITNESS, LLC</b>		
4400 NE 77th Ave., Suite 300 Vancouver, WA 98662		
CORE PART NO	718-5789-XX	REV A
TITLE BASE, ASSY, FAN, HIIT BIKE		
SCALE: 1:8	SHEET 3 OF 4	SHEET SIZE: B

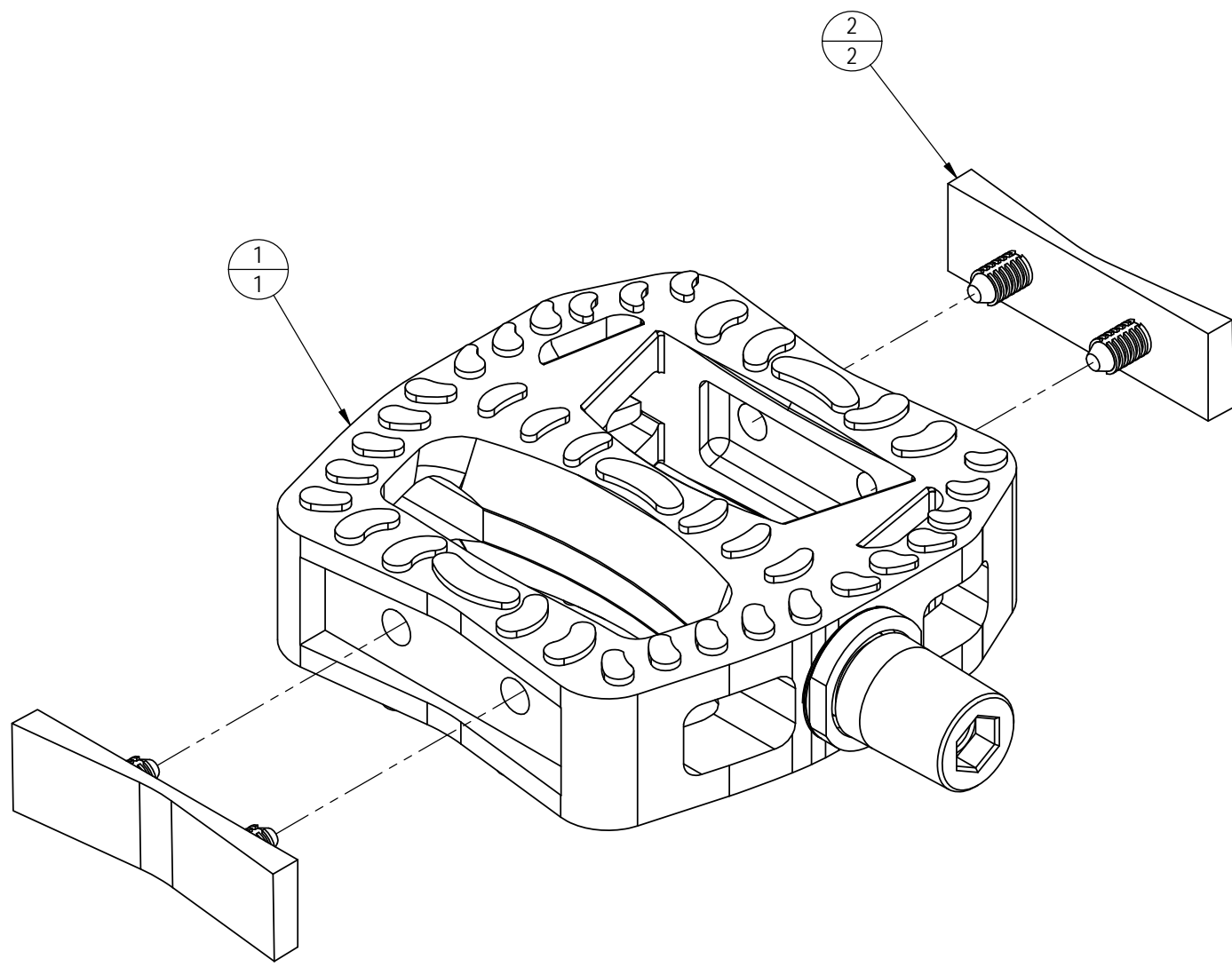


NOTE: CONT.  
 7. TORQUE TO 12 Nm / 106 in-lb  
 8. TORQUE TO 25 Nm / 221 in-lb  
 9. TORQUE TO 45-50 Nm / 33-37 ft-lb  
 10. APPLY LOCTITE 243 TO THREADS

<b>CORE HEALTH &amp; FITNESS, LLC</b>		
4400 NE 77th Ave., Suite 300 Vancouver, WA 98662		
CORE PART NO	718-5789-XX	REV A
TITLE BASE, ASSY, FAN, HIIT BIKE		
SCALE: 1:7	SHEET 4 OF 4	SHEET SIZE: B

NOTES:

REVISION HISTORY				
REV	DATE	DESCRIPTION	ECO	BY
A	9/1/2017	INITIAL RELEASE	15771	AW



ITEM NO.	PART NUMBER	DESCRIPTION	QTY.
1	718-5801	PEDAL, HIIT BIKE, L	1
2	718-5822	PEDAL RECESS FILL, HIIT BIKE	2

**DOCUMENT STATUS:**

NOTICE OF PROPRIETARY INFORMATION  
THIS DOCUMENT SHALL NOT BE REPRODUCED NOR SHALL THE INFORMATION CONTAINED HEREIN BE USED BY OR DISCLOSED TO OTHER EXCEPT AS EXPRESSLY AUTHORIZED BY CORE HEALTH & FITNESS, LLC.

CLASS OF WORK	UNLESS OTHERWISE SPECIFIED DIMS ARE IN mm. TOLERANCES FOR MEASURE OF LENGTH ARE:								ANGLES = ±2°
	0.5 to 3	> 3 to 6	> 6 to 30	> 30 to 120	> 120 to 400	> 400 to 1000	> 1000 to 2000	> 2000	
FINE	±0.05	±0.05	±0.1	±0.15	±0.2	±0.3	±0.5	----	
MEDIUM	±0.1	±0.1	±0.2	±0.3	±0.5	±0.8	±1.2	±2	
COARSE	±0.2	±0.3	±0.5	±0.8	±1.2	±2	±3	±4	
VERY COARSE	----	±0.5	±1	±1.5	±2.5	±4	±6	±8	

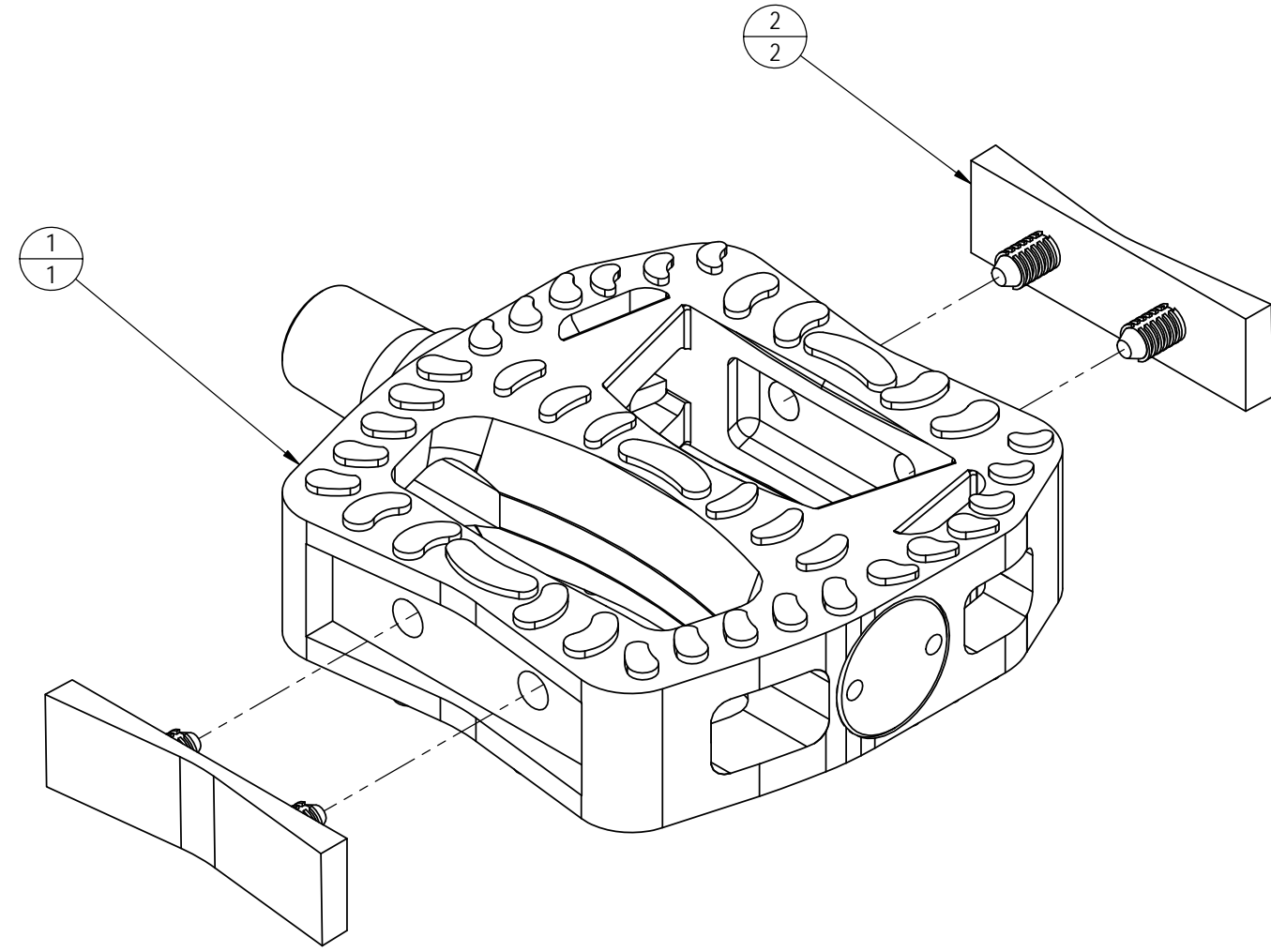
<b>MATERIAL</b> SEE BOM	<b>THIRD ANGLE PROJECTION</b> 	
<b>FINISH</b> N/A	<b>DRAWN</b> AW	<b>DATE</b> 9/1/2017
<b>VENDOR:</b> N/A	<b>P/N:</b> N/A	<b>U.O.M.</b> MM

<b>CORE HEALTH &amp; FITNESS, LLC</b> 4400 NE 77th Ave., Suite 300 Vancouver, WA 98662		
<b>CORE PART NO</b> 718-5820	<b>REV</b> A	<b>TITLE</b> ASSY, PEDAL, HIIT BIKE, L
<b>SCALE:</b> 1:1	<b>SHEET</b> 1 OF 1	<b>SHEET SIZE:</b> B

9 8 7 6 5 4 3 2 1

NOTES:

REVISION HISTORY				
REV	DATE	DESCRIPTION	ECO	BY
A	9/1/2017	INITIAL RELEASE	15771	AW



ITEM NO.	PART NUMBER	DESCRIPTION	QTY.
1	718-5802	PEDAL, HIIT BIKE, R	1
2	718-5822	PEDAL RECESS FILL, HIIT BIKE	2

**DOCUMENT STATUS:**

NOTICE OF PROPRIETARY INFORMATION  
 THIS DOCUMENT SHALL NOT BE REPRODUCED NOR SHALL THE INFORMATION CONTAINED HEREIN BE USED BY OR DISCLOSED TO OTHER EXCEPT AS EXPRESSLY AUTHORIZED BY CORE HEALTH & FITNESS, LLC.

CLASS OF WORK	UNLESS OTHERWISE SPECIFIED DIMS ARE IN mm. TOLERANCES FOR MEASURE OF LENGTH ARE:							ANGLES = ±2°		
	0.5 to 3	> 3 to 6	> 6 to 30	> 30 to 120	> 120 to 400	> 400 to 1000	> 1000 to 2000	> 2000		
FINE	±0.05	±0.05	±0.1	±0.15	±0.2	±0.3	±0.5	----		
MEDIUM	±0.1	±0.1	±0.2	±0.3	±0.5	±0.8	±1.2	±2		
COARSE	±0.2	±0.3	±0.5	±0.8	±1.2	±2	±3	±4		
VERY COARSE	----	±0.5	±1	±1.5	±2.5	±4	±6	±8		

**MATERIAL**  
SEE BOM

**FINISH**  
N/A

**VENDOR:** N/A      **P/N:** N/A

THIRD ANGLE PROJECTION		
DRAWN	INITIAL AW	DATE 9/1/2017
CHECKED		
APPROVED		
	U.O.M.	MM

**CORE HEALTH & FITNESS, LLC**  
 4400 NE 77th Ave., Suite 300  
 Vancouver, WA 98662

CORE PART NO: **718-5821**      REV: **A**

TITLE: **ASSY, PEDAL, HIIT BIKE, R**

SCALE: 1:1      SHEET 1 OF 1      SHEET SIZE: B

9 8 7 6 5 4 3 2 1